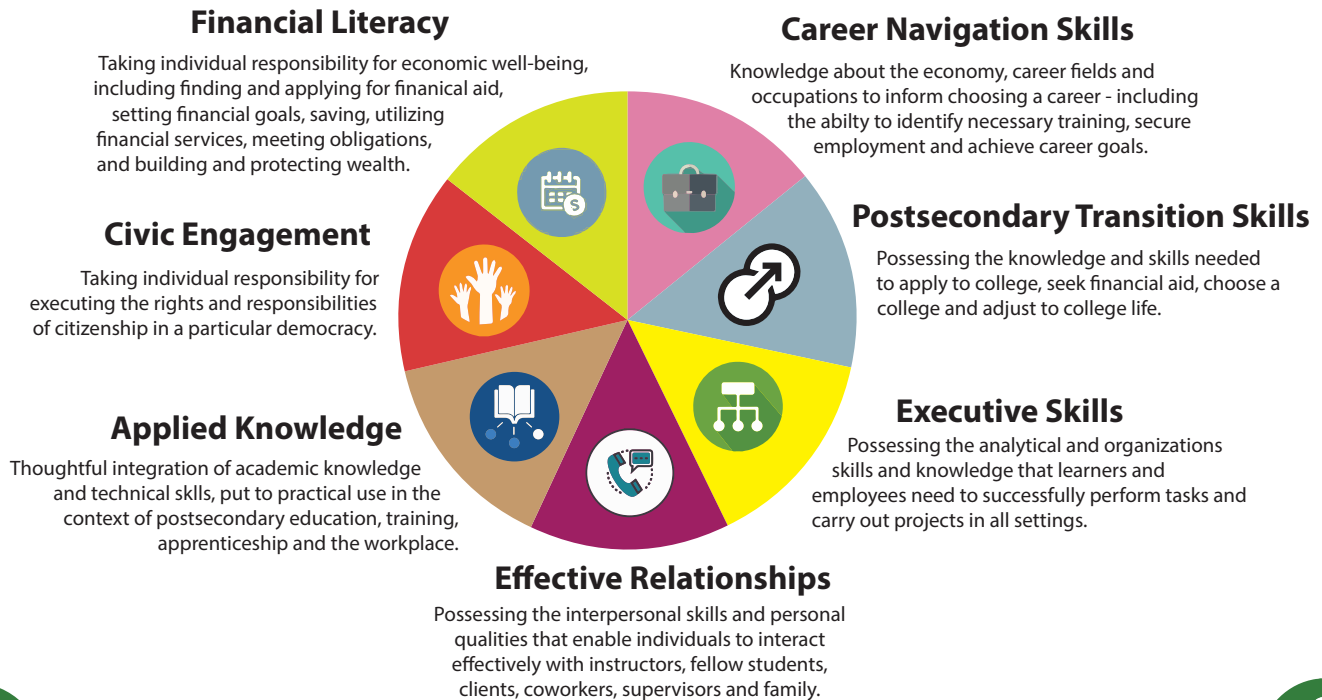


Preparing for Life After High School

Students are life, college, and career ready when they have technical knowledge, employability skills, and academic preparation necessary to be productive citizens.

Indicators of Life Ready



Indicators of College Ready

When students meet:

Standard Testing Benchmarks

- SAT Exam: Math 530 | Reading & Writing 480
- ACT Exam: English 18 | Reading 22 | Science 23 | Math 22
- College Readiness Placement Assessment - determined by postsecondary institution

(Scores listed are minimum scores, students still need 2.8 GPA or higher.)

OR

Academic Indicators

- Advanced Placement (3+ | C or above | Capstone)
- Dual Credit College English, Career Pathway and/or Math (C or above)
- College Developmental/Remedial English and/or Math (C or above)
- Algebra II or English 4 (C or above)
- Three years of Science (C or above)
- International Baccalaureate Exam (4+) | IB Course (C or above) or Diploma Programme

(Scores listed are minimum scores, students still need 2.8 GPA or higher.)

Additional Factors Contributing to College Success

- Earning AS, BS, CS
- FAFSA Completion
- Participation in Career Pathway
- College Academic Advising
- Participation in College Bound Bridge Programs
- Senior math year class | Completion of math courses after Algebra II
- Participation in two or more extra- or co-curricular programs



Indicators of Career Ready

Students are Career Ready if they have identified a career interest and meet two of the behavioral and experiential benchmarks listed below. Students entering the military must meet passing scores for Armed Services Vocational Aptitude Battery (ASVAB) for each military branch.

Career Ready students have:

- 90% Attendance
- 25 hours of Community Service
- Workplace Learning Experience (Job Shadow, Internship, Apprenticeship)
- Industry Credential/Certification
- Dual Credit Career Pathway Course
- One or more organized Co-Curricular Activities

Missoula County
Public Schools

215 South 6th Street West
Missoula, MT 59801
(406) 728-2400 | www.mcpsmt.org

